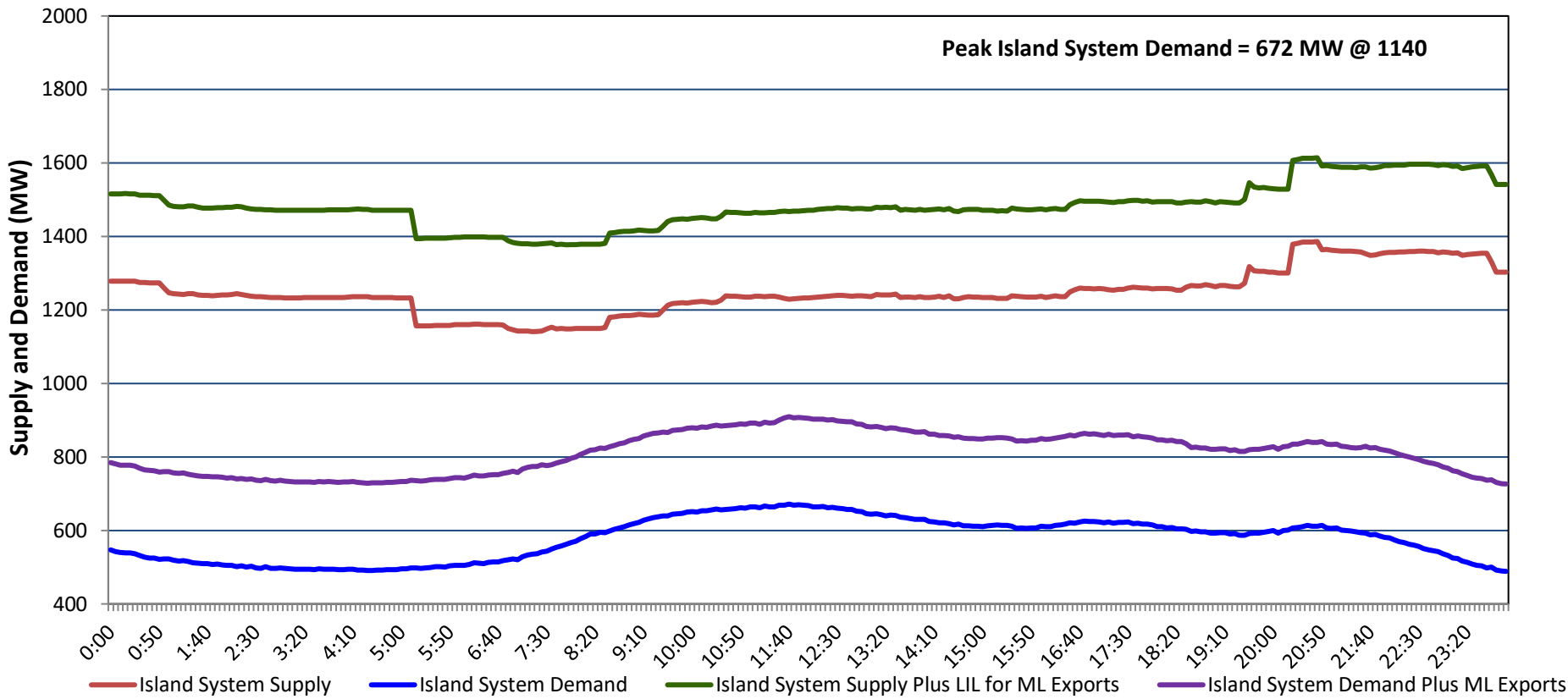


Newfoundland Labrador Hydro (NLH)
Supply and Demand Status Report Filed Monday, August 25, 2025

Section 1
Island Interconnected System - Supply, Demand & Exports
Actual 24 Hour System Performance For Sunday, August 24, 2025



Island Supply Notes For August 24, 2025

- A As of 0800 hours, March 30, 2025, Holyrood Unit 3 unavailable due to planned outage 130 MW (150 MW).
- B As of 0823 hours, March 31, 2025, Bay d'Espoir Unit 1 unavailable due to planned outage (76.5 MW).
- C As of 0823 hours, March 31, 2025, Bay d'Espoir Unit 2 unavailable due to planned outage (76.5 MW).
- D As of 0800 hours, May 04, 2025, Holyrood Unit 1 unavailable due to planned outage (170 MW).
- E As of 0800 hours, June 08, 2025, Holyrood Unit 2 unavailable due to planned outage 115 MW (170 MW).
- F As of 1400 hours, June 29, 2025, St. Anthony Diesel Plant available at 7.7 MW due to forced derating (9.7 MW).
- G As of 0926 hours, July 21, 2025, Cat Arm Unit 2 unavailable due to planned outage (67 MW).
- H As of 0549 hours, July 24, 2025, Cat Arm Unit 1 unavailable due to planned outage (67 MW).
- I At 0514 hours, August 24, 2025, Bay d'Espoir Unit 3 unavailable due to planned outage (76.5 MW).
- J At 2017 hours, August 24, 2025, Bay d'Espoir Unit 3 available (76.5 MW).

Section 2
Island Interconnected System - Supply, Demand & Outlook

Mon, Aug 25, 2025	Island System Outlook ²	Seven-Day Forecast	Island System Daily Peak Demand (MW)	
			Forecast ⁸	Adjusted ⁶
Island System Supply: ⁴ NLH Island Generation: ^{3,7} NLH Island Power Purchases: ⁵ NP and CBPP Owned Generation: LIL/ML Net Imports to Island: ⁹	1,172 MW 760 MW 85 MW 180 MW 147 MW	Monday, August 25, 2025	685	635
		Tuesday, August 26, 2025	630	580
		Wednesday, August 27, 2025	660	610
		Thursday, August 28, 2025	655	605
		Friday, August 29, 2025	640	590
7-Day Island Peak Demand Forecast:	685 MW	Saturday, August 30, 2025	625	575
		Sunday, August 31, 2025	640	590

Island Supply Notes For August 25, 2025

- K At 0616 hours, August 25, 2025, Bay d'Espoir Unit 4 unavailable due to planned outage (76.5 MW).
- L At 0616 hours, August 25, 2025, Bay d'Espoir Unit 5 unavailable due to planned outage (76.5 MW).

- Notes:
- Generation outages for running and corrective maintenance are included. These are not unusual for power system operations. They generally do not impact customer supply. Hydro schedules outages to system equipment whenever possible to coincide with periods when customer demands are low and sufficient supply reserves are available. However, from time to time equipment outages are necessary and reserves may be impacted.
 - As of 0800 Hours.
 - Gross continuous unit output.
 - Gross output from all Island sources (including Note 3).
 - NLH Island Power Purchases include: ML Imports, Exploits Generation, Rattle Brook, Star Lake, Wind Generation and capacity assistance (when applicable).
 - Adjusted for interruptible load and the impact of voltage reduction when applicable.
 - Due to limitations inherent in the design of combustion turbines, the output of combustion turbines may be reduced in the event that ambient temperatures exceed the threshold required for full rated output. This threshold is dependent on the design of each turbine.
 - Does not include ML Exports.
 - LIL Import sunk in the Island System. Actual LIL flows will be restricted by various system conditions including, but not limited to, Island Load, ML Exports and Avalon Unit status.

Section 3
Island Peak Demand and Exports Information
Previous Day Actual Peak and Current Day Forecast Peak

Sun, Aug 24, 2025	Island Peak Demand ¹⁰	11:40	672 MW
	Exports at Peak		238 MW
	LIL Net Imports to Island		4,393 MWh
Mon, Aug 25, 2025	Forecast Island Peak Demand		685 MW

- Notes:
- Island Demand is supplied by NLH generation and purchases, LIL Imports plus generation owned and operated by Newfoundland Power and Corner Brook Pulp & Paper (Deer Lake Power, DLP).